

# CENTER VIEW TITLES

The Center View Titles graph will center predefined viewport title types to the views placed on selected sheets and adjust the title extension line to be the same length as the title text. This graph will only work with Revit versions 2022 or newer and is provided for educational purposes by GeminiBIM, and GeminiBIM has no liability if you choose to use the graph.

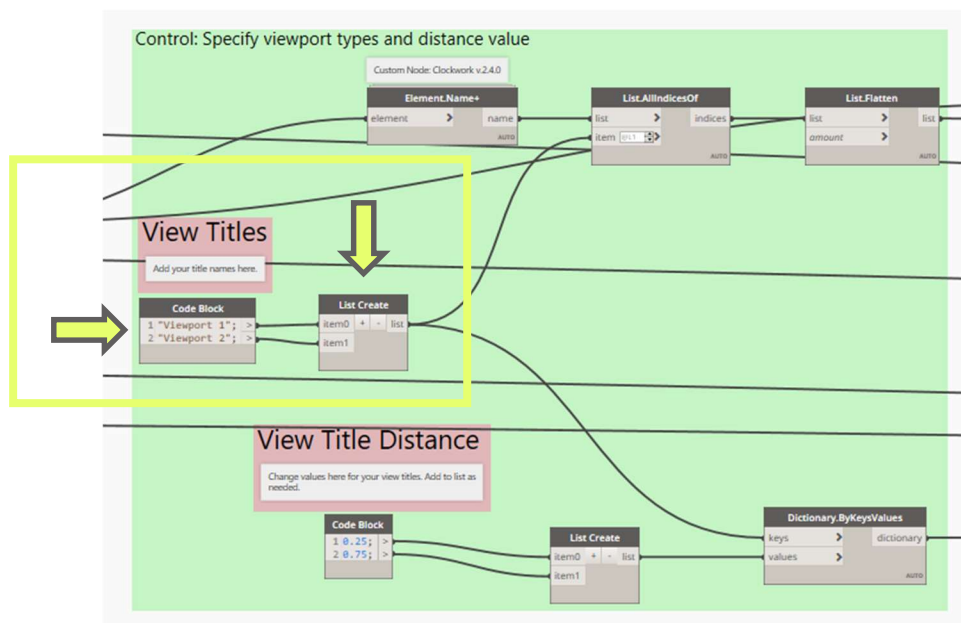
## PREPARING GRAPH

- 1 Install custom packages used in Dynamo graph. For more information on installing custom dynamo packages, visit <https://dynamobim.org>.

Custom Packages Used:

- DynaMEP 1.2.8
- Clockwork for Dynamo 2.x 2.4.0
- Orchid 212.1.0.8138spring nodes 210.1.1
- Rhythm 2022.4.1
- Data-Shapes 2022.2.103
- Genius Loci 2022.4.19tom Packages used:

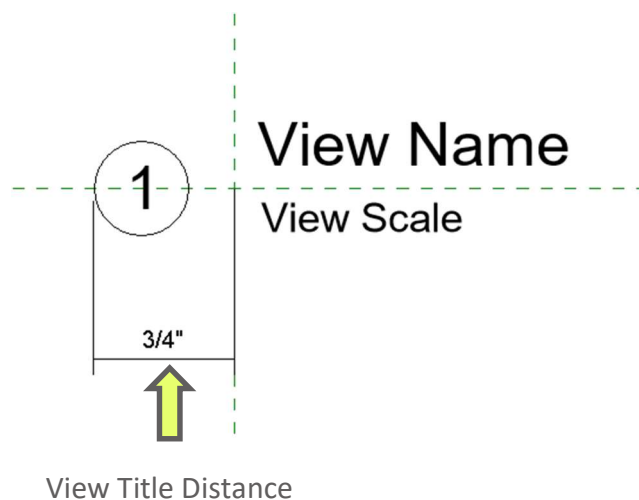
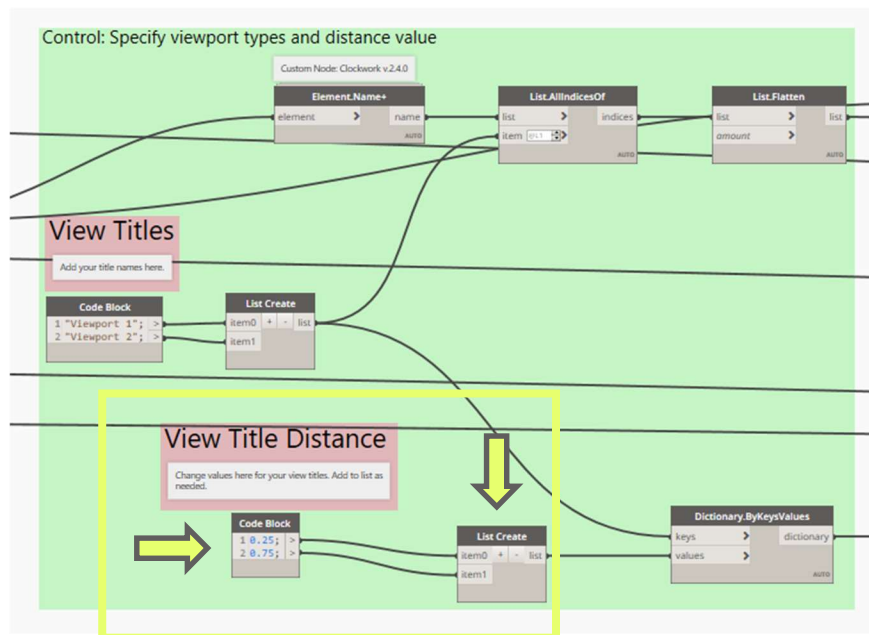
- 2 Open the Dynamo graph and locate the area to add necessary Viewport Title names to the list. The area will be identified with a pink box labeled “View Titles.” Be sure that the Code Block and List Create nodes match in list length.



- 3 Open the dynamo graph and locate the area to add the necessary View Title Distance values to the list. The area will be identified with a pink box labeled “View Title Distance.” Be sure that the Code Block and List Create nodes match in list length.

Note that the dynamo graph is designed to be used with view titles with origins located at the start of the view title line.

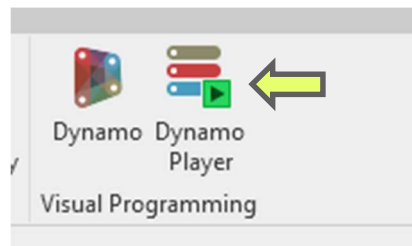
View Title Distance = The distance from the origin to the left extent of the title in decimal inches. (This value is used in calculating the correct view extension line length.)



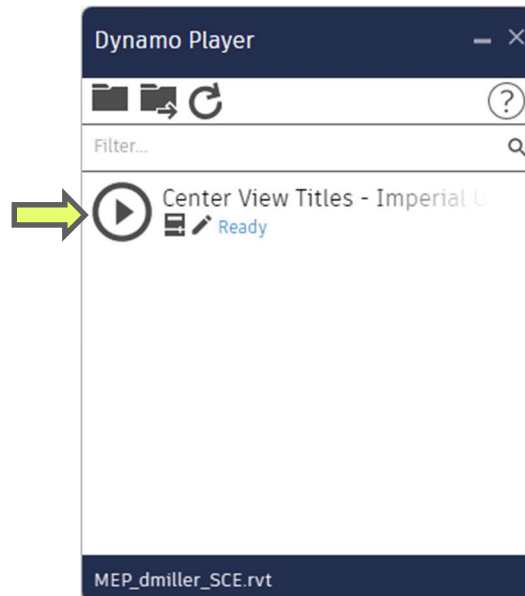
- 4 Save the changes and close Dynamo. The graph is now ready to be used with Dynamo Player. For more information on how to use Dynamo player, visit <https://dynamobim.org>.

## USING CENTER VIEW TITLES

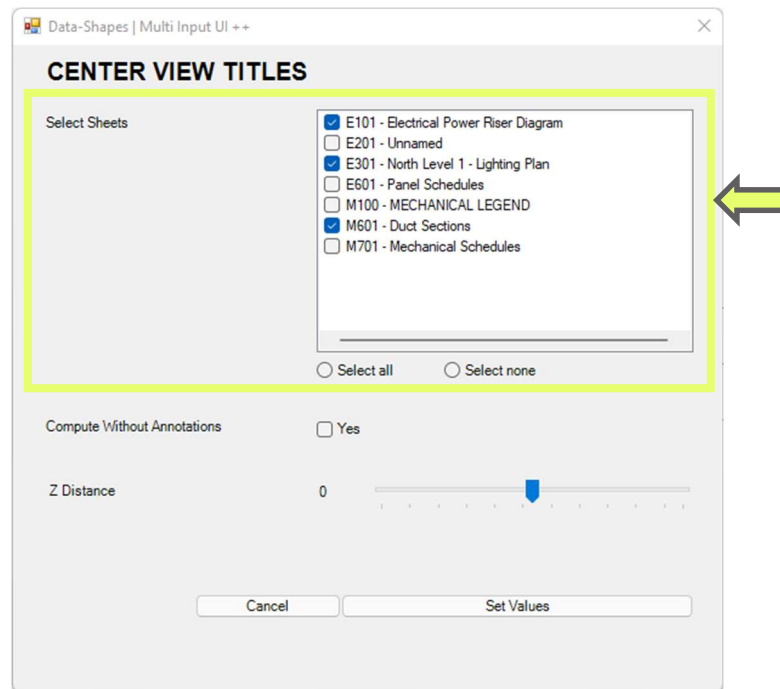
- 1 From the ribbon, Manage Tab, locate and select the Dynamo Player Icon. Browse to the folder containing the graph.



- 2 Press the play icon next to the Center View Titles graph.



- 3 Select sheets you would like to center view titles on from the user form.

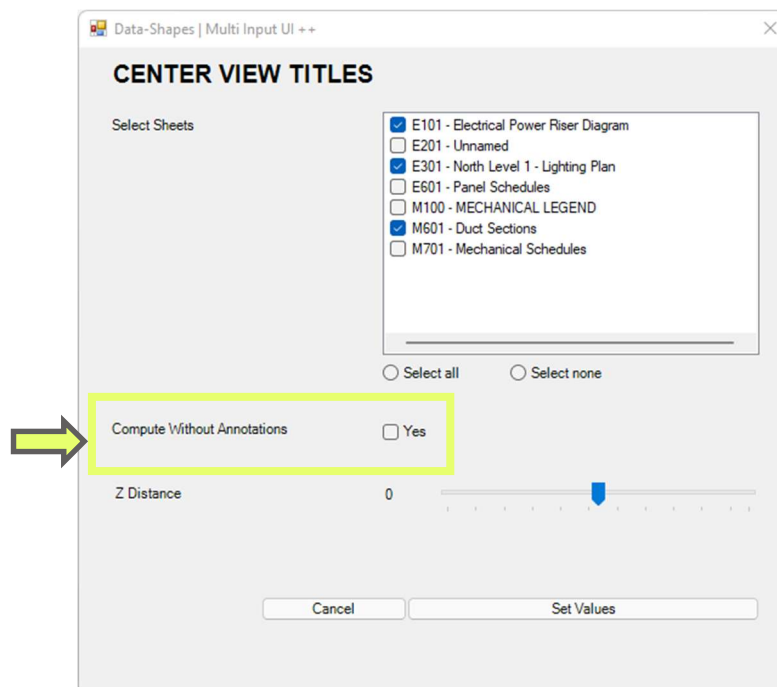


The screenshot shows the 'CENTER VIEW TITLES' dialog box. The 'Select Sheets' section is highlighted with a yellow rectangle. A yellow arrow points to the right side of this rectangle. The list of sheets includes:

- ☒ E101 - Electrical Power Riser Diagram
- ☐ E201 - Unnamed
- ☒ E301 - North Level 1 - Lighting Plan
- ☐ E601 - Panel Schedules
- ☐ M100 - MECHANICAL LEGEND
- ☒ M601 - Duct Sections
- ☐ M701 - Mechanical Schedules

Below the list are radio buttons for 'Select all' and 'Select none'. The 'Compute Without Annotations' checkbox is unchecked. The 'Z Distance' is set to 0. The 'Cancel' and 'Set Values' buttons are at the bottom.

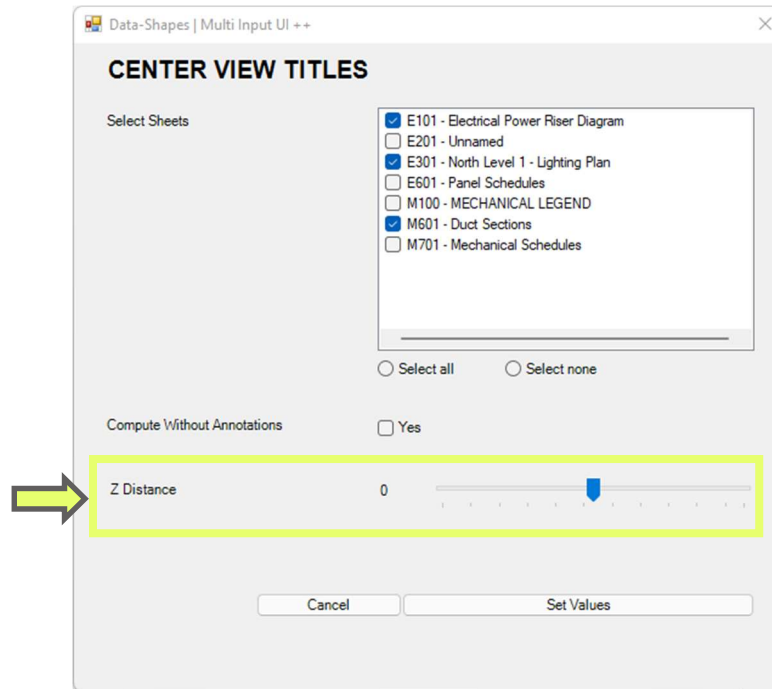
- 4 If desired, select Compute Without Annotations setting. If selected, the center of the view title will be calculated without considering annotations such as grids and levels.



The screenshot shows the 'CENTER VIEW TITLES' dialog box. The 'Compute Without Annotations' checkbox is highlighted with a yellow rectangle. A yellow arrow points to the left side of this rectangle. The list of sheets is the same as in the previous screenshot. The 'Z Distance' is set to 0. The 'Cancel' and 'Set Values' buttons are at the bottom.

- 5 Specify Z Distance of view title in relation to the bottom extents of the calculated viewport boundary. A negative value will place the view title below the calculated bottom extents of the viewport boundary, whereas a positive value will place it above.

- The default available range is -1" to 1" in 1/16" increments.



- 6 Select the Set Values button to execute the graph, or you can select the Cancel button to exit the command at any time.

